

June 2007

Volume 3, Issue 3

The KCA Eagle



Newsletter of the **Kansas Correctional Association**

Recognizing the Achievements of Others



By **Colene Fischli**
KCA President

The State of Kansas recently celebrated Correctional Employees Week. Many great staff persons were nominated by their supervisors or peers to earn the honor of Employee of the Year. What do you think makes those people stay in their positions?

It is important to keep staff motivated and happy in their work to retain quality

workers. Unlike corporate America, the corrections business cannot provide bonuses or other monetary rewards for a job well done, but did you know that salary and benefits are not documented as motivating factors for employees?

Employees want to achieve goals, advance within the organization, and receive recognition for their efforts. Many times in this business we focus on the negative and we overlook the efforts of the staff that take initiative and are creative in getting their job done. When an employee leaves we typically conduct an exit interview. We need to begin to conduct those interviews with existing staff to determine what it is about their jobs that make them stay. What motivates

them and what can we do to help them continuously improve? How can we utilize those high performers to mentor newer staff or the staff person experiencing burnout?

One of the ways you can recognize an outstanding employee is to nominate them for the KCA Employee of the Quarter. The nomination form can be found on page two and three of this newsletter and at the association's website at ksca.org.

Nominations should be sent to Secretary Mark Trivilino at 915 W. Spruce, Olathe, Kansas 66061 or email at Mark.Trivilino@jocogov.org.

What a great way to recognize one of your peers!

Kansas Correctional Association Officers Participate in Fundraiser for Special Olympics

On the chilly SNOWY night of April 13th 2007 several members of the Kansas Correctional Association braved the cold and trekked out to the **Texas Roadhouse** restaurant in Olathe Kansas. There they worked diligently in two 2 ½ hour shifts as waiters and waitress'. While filling up water glasses they were able to share with the patrons of **TEXAS ROADHOUSE** about their jobs in corrections and more importantly about Special Olympics in Kansas. The KCA members spoke of the

mission of Special Olympics as well as the need for financial support and additional volunteers.

Many of the KCA Members received positive words of encouragement from the patrons for not only walking "the toughest beats in America" but also for their kind hearts and desire to volunteer and help the Special Olympics program in Kansas. A local news channel came on the scene and several of the KCA members were interviewed

and highlighted on the late night news.

In total, over \$1,000 was earned over the course of the evening for Special Olympics. The KCA members volunteering that night were all from the Johnson County Department of Corrections- Juvenile Services Division: Natalie Diviney, Kelly Borgstadt, Brandi Hodge, Ginger Brown, Carl Plaskett, Scott Dellaert, Sandra Carl, Sarah Berley, Becky Seidler, and Mark Trivilino.

**KCA
Regional
Training
Oct 2nd
2007
Hutchinson
Junior
College**
See Page 8

Visit us on the
web at:
www.ksca.org

08/10/07 – 08/15/07
**American
Correctional
Association (ACA)
137th Congress of
Corrections:
Perceptions of
Corrections.** Bartle
Hall, Kansas City, MO.
For more information,
please visit
www.aca.org.

Highlights:

Quarterly Award	2
Staff News	4
SG Co ReEntry	5
Legal Update	6
Nominations	6
KCA Training	8
KDOC History	9
Survey	10



KANSAS CORRECTIONAL ASSOCIATION EMPLOYEE OF THE QUARTER NOMINATION FORM

KCA Members:

The Executive Board recognizes an outstanding "Employee of the Quarter" from nominations of persons employed in the adult or juvenile criminal justice system. The person making the nomination must be a KCA member in good standing to make the nomination. The recipient need not be a current KCA member to receive this prestigious award. The KCA strongly believes that exceptional service deserves to be officially and publicly recognized.

To nominate a worthy correctional professional, simply fill out the following information and mail it to the address listed below.

The quarters are as follows:

- 1st - January 1-March 15;
- 2nd - March 16- June 15;
- 3rd - June 16-Sept 15;
- 4th - September 16- December 15.

Nominations are accepted continuously; however all nominations must be received by 1700 hrs on the date of the quarters closing. The person will be nominated for the quarter in which we receive the nomination.



Print this form and return it to:
 Mark Trivilino, KCA Awards
 915 W. Spruce
 Olathe, KS 66061
 Telephone: 913-764-7411
 Fax: 913-764-7110
 Email: Mark.Trivilino@jocogov.org

**KANSAS CORRECTIONAL ASSOCIATION
 EMPLOYEE OF THE QUARTER
 NOMINATION FORM**

Name of Nominee: _____
 Place of Employment: _____
 ACA/KCA Membership # (if applicable): _____
 Mailing Address: _____
 Name of Supervisor: _____

Please us an extra sheet of paper if needed for the following:

Accomplishment in present position:

Brief Summary of why you think this nominee should be selected for the award:

Nominated by: _____
 ACA/KCA Membership #: _____
 Phone: _____

Staff News



Sam Cline

Colene Fischli, KCA President, has been promoted to the position of Program Manager in the Facility Management Division of the Kansas Department of Corrections. Previous to this appointment Colene served as Administrator of the Kansas Parole Board.

Libby Scott has been appointed to the position of Administrator for the Kansas Parole Board, which is comprised of **Paul Feleciano** (Chair), **Robert Sanders**, and **Patricia Biggs**.

Liz Rice was appointed to the position of Corrections Manager II in the Facility Management Division of the Kansas Department of Corrections. This was the position vacated by **Bill Cummings**, when he was promoted to the position of Deputy Warden of Topeka Correctional Facility.

Louis Bruce, long-time employee of the Kansas Department of Corrections and current Warden of the Hutchinson Correctional Facility will retire in June. **Sam Cline**, currently the Warden of the Ellsworth Correctional Facility will replace Warden Bruce.

Tina Davis, Human Resource Manager of Ellsworth Correctional Facility has returned to private sector employment. **Jina Murrell** was promoted to this recently vacated position.

Shirley Lawson, Human Resource Manager of Hutchinson Correctional Facility retired and **Brian Webster** was promoted to fill her vacant position.

Eutoica Lyons is the Kansas Department of Correction's newest receptionist. She filled the position vacated by **Margaret Murdock**.

Elias Garcia, former Executive Director of the Kansas Hispanic and Latino American Affairs Commission (KHLAAC), joined the Kansas Department of Corrections in May as a Diversity Recruitment Coordinator, focusing on diversity recruitment primarily in the Hispanic community.

Jim Goodnow, **Greg Stout** and **Rick Fusaro** are new members of the information technology section of the Kansas Department of Corrections. Jim and Rick are Applications Developer IIIs and Greg is an Applications Developer I.

Vickie Brungardt has been promoted to the position of Program Consultant II in the Community Corrections Services section of the Kansas Department of Corrections. Previously she had worked as a Corrections Counselor II at Norton Correctional Facility.

Carrie Howell was promoted from a Parole Officer I to a Parole Office II position in the Topeka Parole Office.

Maggie Haghirian switched jobs in the Kansas Department of Corrections. She had been a Staff Development Specialist I in the Programs Division but is now a ReEntry Field Skills Developer at Lansing Correctional Facility.

Chuck Morris, who had been a Corrections Specialist I (1st Sergeant) at El Dorado Correctional Facility was promoted to ReEntry Field Skills Developer at EDCF.

Kevin Hays, Parole Officer I at the Salina Parole Office, was promoted to Parole Officer II (Special Enforcement Officer) at the same parole office.



Shirley Lawson



Rick Fusaro



Louis Bruce



Eutoica Lyons



Jina Murrell



Bill Cummings

Sedgwick County ReEntry Program

Submitted by Sandra Haas, ReEntry Coordinator (316-321-7284, ext. 2701)

Why the Sedgwick County Reentry Program?

Each month an average of 490 adult offenders are released from Kansas Prisons. They are often released back to the same streets where the crime they committed occurred. Upon release many have little or no money, no place to live, no job or ability to achieve sustained employment and no social support. In addition, many labor under the burden of lifelong patterns of anti-social influences and thinking. The result is that nearly 50% of those released return to prison within 6 months. Through the Sedgwick County Reentry Program (SgCRP), we now have the opportunity to help make our communities safer by improving an offenders' chances of a successful return home.

What is the SgCRP?

SgCRP is administered by the Kansas Department of Corrections. This program implements a comprehensive program to prepare and assist individuals transitioning back into the community. This program is part of a statewide initiative to establish research-based, effective reentry models and practices in institutions and communities all over the state. It is modeled after national models and the Shawnee County Reentry Program here in Kansas.

This program includes many community partners; corrections, law enforcement, businesses, job service/training agencies, neighborhoods, political representatives, landlords, mental and medical health providers, victim services, ex-offenders, faith and community based organizations.

Who are the individuals participating in the SgCRP?

Eligible participants are identified throughout Kansas prisons. Risk/needs assessments are completed to identify high risk individuals. Necessary transfers are made to house male participants at El Dorado Correctional Facility; the females in Kansas are all housed at the Topeka Correctional Facility. Program participants must meet the following criteria.

- Be scheduled for release to Sedgwick County
- Have 12-18 months left of their sentence to complete
- Be considered high risk for re-offending

How does SgCRP work?

CLASSES

Once selected, participants are interviewed to determine risks and needs. With the guidance and assistance of a Case Manager and facility based Reentry Coordinator, participants select and attend classes suited to their individual needs. Classes are established by SgCRP and taught/facilitated by staff and volunteers.

Some classes available may include:

- Money Management – Money, Finance, Budgeting, Housing
- Employment – Resume Writing, Job Applications, Work Ethics, Job Search
- Family Transition – Relationship Building, Family Communication, Parenting, Community Resources
- Reentry Planning – Relapse Prevention, Overcoming Stigma, Goal Setting, Time Management
- Cognitive – Problem Solving and Social Skills Interventions
- Family Workshop – A discussion between participants and his/her family around issues they expect to face, and how they will handle the challenges of reentry.

Prior to release from prison, Case Managers will identify resources and develop a plan to help bridge the individual from the institution to the community i.e. obtaining a drivers license/ID card/Social Security card, exploring housing options and employment opportunities, locating faith-based or other social supports, arranging for space in support groups and/or other social service agencies etc.

Family Support

We know that those releasing from prison are most successful when they have the support of positive family members and friends. Participants may identify positive family supports and request Reentry Staff contact and invite them to attend the Family Workshop, and possibly meet with parole and Reentry Staff to assist with release planning.

CONTINUED ON PAGE 6

Sedgwick County ReEntry Program, CONTINUED

Continued support upon release

With the link to the community already in place, individuals will smoothly transition into community based support groups, education opportunities and other identified services within the community.

Participants will be asked to present before an accountability panel of community volunteers that have the best interest of these individuals in mind and who provide a network of support and encouragement as well as accountability to every participant.

SgCRP will provide alumni services through periodic gatherings for successful graduates providing forums to celebrate success and give opportunities to "give back" as graduates remain stable productive citizens in the community.

Recent Legislative Changes - SB 204 (Offender Registration)

- Adds as a registration requirement for persons convicted of Aggravated Trafficking (human trafficking) defined by K.S.A. 21-3447 and attempts, conspiracies, and solicitations. [Does not include comparable out of state convictions].
- Adds as a registration requirement for persons convicted of Unlawful Manufacture or attempt to manufacture any controlled substance defined by K.S.A. 65-4195 or comparable out of state convictions unless the court finds that the manufacture of the controlled substances was for personal use. Registration includes convictions for comparable out of state convictions.
- Adds as a registration requirement for persons convicted of possession of ephedrine, pseudoephedrine, red phosphorus, lithium metal, sodium metal, iodine, anhydrous ammonia, pressurized ammonia or phenylpropanolamine, or their salts, isomers or salts of isomers with intent to use the product to manufacture a controlled substance as defined by K.S.A. 65-7006, and amendments thereto, unless the court makes a finding on the record that the possession of such product was intended to be used to manufacture a controlled substance for such person's personal use. Registration includes convictions for comparable out of state convictions.
- Adds as a registration requirement for persons convicted of violations of K.S.A. 65-4161 (sale or possession with intent to sell opiates, opium or narcotic drugs, or any stimulant designated in subsection (d)(1), (d)(3) or (f)(1) of K.S.A. 65-4107). Registration includes convictions for comparable out of state convictions.
- Increases the number of times that an offender must report in person to the sheriff from once per year to 3 times per year. First appearance is during the month of the offender's birthday then every four months thereafter. A \$20 fee is required for each appearance. Offenders are to verify residence, school attended, employment, and vehicle registration. Sheriff to forward to KBI registration information and current photograph.
- Repeals the requirement that the KBI send address verification letters to offenders which were to be returned to KBI.
- Provides retroactively an exemption, pursuant to court order, from registration for juvenile offenders for sexually violent crimes set out in of K.S.A. 22-4902(c) if such crime is not an off-grid or severity level 1 felony on the nondrug grid.
- Prior law requiring persons who were required to register in another state to register in Kansas for the time period required by the other state's law or the Kansas requirement, which ever is longer, is made retroactive to include convictions prior to June 1, 2006 as well as to persons who moved to Kansas prior to June 1, 2006.
- Registration forms prepared by KBI shall also include registration number of each license plate for any vehicle normally operated by the offender and all internet email addresses and online identities used by the offender.

Nominations to the KCA Executive Board Are Sought

By Colene Fischli, KCA President

The Kansas Correctional Association is seeking nominations to fill the vacancy created by the resignation of Vice President Peter Grande. The person selected for this position shall serve a term of two years as Vice President, two years as President, and one year as Past President.

Other Executive Committee positions coming open this year are the Secretary and two Member at Large positions. Interested persons should complete the nomination form located on the next page of this newsletter and on the KCA website at ksca.org. The candidate should be a member of KCA/ACA in good standing and willing to uphold the mission of the association.

Questions regarding the Executive Committee positions or the nomination process can be answered by any current Executive Committee member or by calling President Colene Fischli at 785-296-4118.



KANSAS CORRECTIONAL ASSOCIATION
Nomination Form

The following KCA Executive Board Officer positions are vacant or will soon be vacant. Please consider nominating yourself or someone else to serve on the board. Officers must be KCA members and committed to the furtherance of correctional and criminal justice excellence and professionalism.

Officers usually meet on a monthly basis and manage the activities of the association, including the development and facilitation of training opportunities.

For additional information about positions, please review the KCA IMPP Manual at: www.ksca.org or contact Colene Fischli, KCA President, Kansas Department of Corrections, LSOB, 900 SW Jackson, 4th Floor, Topeka, KS 66612, Phone: 782-296-4118, Fax: 785-296-0250, Email: ColeneF@kdoc.dc.state.ks.us.

NOTE: If you are nominating someone other than yourself, please ensure that they are interested in serving before submitting their names for consideration.

- Vice Present (currently vacant) (2-year term): _____ (Nomination)
- Secretary (will be vacant at end of 2007) (2-year term): _____ (Nomination)
- Member-at-Large (will be vacant at end of 2007) (2-year term): _____ (Nomination)
- Member-at-Large (will be vacant at end of 2007) (2-year term): _____ (Nomination)

For each person nominated above, please provide the following information *(use additional pages, if necessary)*:

NAME:		
TITLE:		
AGENCY:		
ADDRESS:		
CITY:	STATE:	ZIP:
WORK PHONE:	WORK FAX:	
E-MAIL ADDRESS:		
KCA/ACA MEMBERSHIP ID#:		
BIOGRAPHICAL INFORMATION:		

Please return nominations to Colene Fischli (at the above address) on or before **Tuesday, July 31st, 2007**.



KANSAS CORRECTIONAL ASSOCIATION
REGIONAL TRAINING
Tuesday, October 2, 2007
Hutchinson Community College, Stringer Fine Arts Center
600 East 11th Street, Hutchinson, Kansas

7:30 AM – 8:00 AM	Registration
8:00 AM – 11:30 AM	Caterina G. Spinaris Tudor, Ph.D., LPC, Executive Director, Desert Waters Correctional Outreach – Correctional Fatigue
11:30 AM – 1:00 PM	Lunch <i>(on your own)</i>
1:00 PM – 5:00 PM	Ken Landware, Lieutenant, Wichita Police Department – BTK Investigation

NAME: _____

TITLE: _____

AGENCY: _____

ADDRESS: _____

CITY: _____ STATE: _____ ZIP: _____

WORK PHONE: _____ WORK FAX: _____

E-MAIL ADDRESS: _____

KCA/ACA MEMBERSHIP ID#: _____

- \$ 20.00 **Early Bird** – for registrations received on or before Friday, 09/14/2007
- \$ 25.00 **Regular** – for registrations received after Friday, 09/14/2007 (or onsite)
- \$ 15.00 **Student/Faculty** – must show (or provide copy of) valid student/faculty ID

Please indicate method of payment: Enclosed Check Enclosed Purchase Order Bill agency noted above

To register, please complete this form (or facsimile) and forward it to: Colene Fischli, KCA President, Kansas Department of Corrections, LSOB, 900 SW Jackson, 4th Floor, Topeka, KS 66612, Phone: 782-296-4118, Fax: 785-296-0250, Email: ColeneF@kdoc.dc.state.ks.us. Checks and money orders should be made payable to KCA.

Area Lodging: Grand Prairie Hotel and Convention Center, 1400 North Lorraine Street, Hutchinson, KS 67501, Toll-Free: 866-577-7527, Local: 620-669-9311, Fax: 620-669-9830.

Refund Policy: A full refund is available until Friday, September 14, 2007. No refunds are available after September 14, 2007. Substitutions are permitted. In order to receive a refund, written requests must be sent to KCA, c/o Colene Fischli (see address above).

History of the Kansas Department of Corrections

In 1864 the Constitution for the State of Kansas established provisions for the State Penitentiary (KSP) to be built at Lansing, Kansas. In 1895 the State Industrial Reformatory (KSIR) was established in Hutchinson, Kansas. A Women's Industrial Farm was constructed in 1917, adjacent to the State Penitentiary, which came to be known as the Kansas Correctional Institution for Women (KCIW). Each of these institutions operated independently of the other and received offenders through direct order of the sentencing courts.

On July 1, 1957 the office of Director of Penal Institutions was established with the responsibility for administering the existing facilities. The Director, appointed by the Governor and subject to Senate confirmation, was given the authority to appoint wardens and create in-service training programs. This same legislation designated KCIW as a division of KSP and established traditional industry programs that would evolve into the Kansas Correctional Industries (KCI).

The Kansas Reception and Diagnostic Center (KRDC) was established in 1961 in Topeka and began evaluating convicted offenders for educational and treatment programming needs. By 1962 KSP and KSIR were receiving their first inmates from what would later become known as the Reception and Diagnostic Unit (RDU).

The 1970s brought about numerous changes. Honor Camps were created at Tuttle Creek State Park (Riley County), Toronto Reservoir (now Fall River

State Park), and a mobile unit at Perry Reservoir (Jefferson County), then an additional Camp was established at the El Dorado State Park. The goal of these camps was inmate rehabilitation as well as the improvement and maintenance of the parks.

Additional legislative action transferred responsibility for institutional placement from the sentencing courts to the State Penal Director, providing internal authority for movement and housing of inmates.

Work Release programs were established in 1972 at Hutchinson (KSIR) and in Wichita in 1976 at the Wichita Work Release Facility (WWRF). In 1974 the Kansas Correctional Vocational Training Center (KCVTC) opened in Topeka for the care, custody, and rehabilitation of youthful offenders.

On July 1, 1974, during a general reorganization of state government, the Kansas Department of Corrections was officially established. The secretary was directed by law to create three internal divisions to address Field Services, Institutional Operations, and Management Services. In 1979, private industries were authorized within correctional facilities.

From the mid-1980s through the mid-1990s, the KDOC experienced considerable expansion with additional facilities established in Topeka, Winfield, Norton, Osawatimie, Ellsworth, Hutchinson, Larned, and El Dorado. By the mid-1990s the smaller facilities had all merged operations and administrations with nearby larger facilities.

Originally the transportation of inmates throughout the state was the responsibility of the individual facilities to which they were assigned. In 1989 these transportation operations were consolidated into a centralized management function in Topeka with buses operating out of Lansing and Hutchinson. Transportation management was transferred to Hutchinson in 2001. The year 1995 brought about the final transfer of all female inmates from Lansing to Topeka, making TCF the only female state correctional facility in Kansas.

The Reception and Diagnostic Unit transferred to El Dorado Correctional Facility (EDCF) in 2001 in furtherance of service enhancement. This allowed additional consolidation of operations in the Topeka area. RDU operations still exist at TCF for female inmates while male inmates are processed at EDCF.

You can learn more about Kansas Department of Corrections facilities, programs and operations by visiting our website at www.dc.state.ks.us

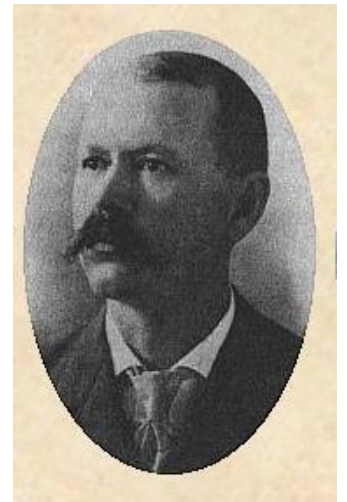
Developed by: **Troy Robinson**, Staff Development Director, Hutchinson Correctional Facility

For more information, contact: **Frances Breyne**, Public Information Officer, Kansas Department of Corrections, LSOB, 900 SW Jackson, 4th Floor, Topeka, Kansas 66612, 785-296-5873, FrancesB@kdoc.dc.state.ks.us

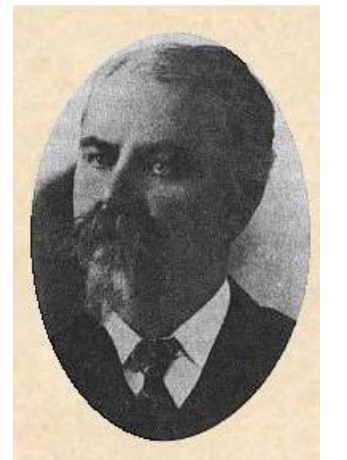
William H. Haskell (1853-1918) was warden of KSP from 1905 to 1909.



Henry Hopkins (1837-1883) served as Warden of KSP from the opening of the institution in 1867 to 1883.



J. B. Tomlinson (1861-1922), was Warden of KSP from 1899 to 1901.



KCA Executive Board

Past President

Jim Terrones
(913) 764-7411

jim.terrones@jocogov.org

President

Colene Fischli
(785) 296-4118

ColeneF@kdoc.dc.state.ks.us

Vice President VACANT

Secretary

Mark Trivilino
(913) 764-7411

mark.trivilino@jocogov.org

Treasurer

Melissa Abrams
(913) 715-4502

Melissa.Abrams@jocogov.org

Member-at-Large

Deborah Ferguson
(785) 832-5343

dferguson@douglas-county.com

Member-at-Large & Web Master

Ron McVeigh
(785) 296-2942

RonMc@kdoc.dc.state.ks.us

Member-at-Large

Geri Reece
(913) 715-4510

Geri.Reece@jocogov.org

Member-at-Large

Jeff Duncan
(785) 296-5685

JDuncan@ksija.org

Your Opinion is Sought

The KCA Executive Board, in an effort to look at ways to become more progressive and to economize, would like to know each member's preferred mode of receiving information from the association.

Currently, the association maintains both a website (at www.ksca.org) and a quarterly newsletter (The KCA Eagle). We would like to know what your opinion is in regards to whether we should continue issuing a newsletter or disseminate all information via pages on

the KCA website. And if we continue with a newsletter, we want to know whether dissemination could be accomplished via the website, eliminating the need for costly printing and postage. Any savings on printing and postage expenses could be diverted to our training budget, allowing us to reduce the cost to attendees and/or pay for premium speakers.

Please note that because of file size issues, dissemination of a newsletter by email is not

an option, but establishment of a KDOC "blog" may be.

Please let us know what your thoughts, opinions and concerns are in regards to information dissemination.

Please forward all comments to: Colene Fischli, KCA President, Kansas Department of Corrections, LSOB, 900 SW Jackson, 4th Floor, Topeka, Kansas 66612, Phone: 785-296-4118, Fax: 785-296-0250, Email: ColeneF@kdoc.dc.state.ks.us.

A note from our editor . . .

Please forward articles, suggestions/comments, reminisces of times past, photographs, notices of personnel changes, job listings, and other newsworthy items to The KCA

Eagle newsletter editor, Holly Zane at LSOB, 900 SW Jackson, 4th Floor, Topeka, KS 66612, fax: 785-296-0759, or email: HollyZ@kdoc.dc.state.ks.us.



KANSAS CORRECTIONAL ASSOCIATION

c/o KS Department of Corrections
LSOB, 900 SW Jackson, 4th Floor
Topeka, Kansas 66612-1284